



Area	Seq	City	Projected Meter Counts			Deployment Plan												
						2023				2024				2025				Totals
			Single-Phase	Poly-Phase	Totals	Q1	Q2	Q3	Q4	Q1	Q2	Q3	Q4	Q1	Q2	Q3	Q4	
1	1	El Paso	92,307	4,425	96,732	19,950	51,210	25,572										96,732
2	1	El Paso	67,623	2,382	70,005			21,120	48,885									70,005
2	2	Canutillo	5,037	170	5,207				1,515	3,692							5,207	
2	3	Vinton	683	69	752					752							752	
2	4	Anthony	2,144	123	2,267					2,267							2,267	
3	1	El Paso	58,462	3,142	61,604					43,740	17,864						61,604	
4	1	El Paso	90,319	4,033	94,352						32,460	52,560	9,332				94,352	
5	1	El Paso	34,283	814	35,097								20,480	14,617			35,097	
5	2	Socorro	15,249	309	15,558									15,558			15,558	
5	3	Horizon	14	22	36									36			36	
5	3	Horizon City	204	7	211									211			211	
5	4	San Elizario	5,433	56	5,489									4,298	1,191		5,489	
5	5	Clint	2,919	74	2,993										2,993		2,993	
5	6	Fabens	3,976	163	4,139										4,139		4,139	
5	7	Tornillo	1,277	53	1,330										1,330		1,330	
5	8	Fort Hancock	921	74	995										995		995	
5	9	Esperanza	1	0	1										1		1	
5	10	Sierra Blanca	550	31	581										581		581	
5	11	Allamoore	1	1	2										2		2	
5	12	Van Horn	1,506	110	1,616										1,616		1,616	
6	1	Organ	2	0	2			2									2	
6	2	Las Cruces	38,443	1,660	40,103			7,438	22,320	10,345							40,103	
6	3	Mesilla Park	438	19	457					457							457	
6	4	Mesilla	1,394	67	1,461					1,461							1,461	
6	5	San Miguel	568	21	589					589							589	
6	6	Mesquite	1,235	81	1,316					1,316							1,316	
6	7	La Mesa	1,061	43	1,104					1,104							1,104	
6	8	Vado	1,086	71	1,157					1,157							1,157	
6	9	Berino	880	28	908					908							908	
6	10	Chamberino	452	11	463					463							463	
6	11	Chaparral	6,981	80	7,061					5,384	1,677						7,061	
6	12	Anthony	6,684	262	6,946						6,946						6,946	
6	13	La Union	440	13	453						453						453	
6	14	Santa Teresa	2,819	237	3,056						3,056						3,056	
6	15	Sunland Park	6,542	298	6,840						6,840						6,840	
7	1	Mesilla Park	2	0	2						2						2	
7	2	Organ	4	0	4						4						4	
7	3	Las Cruces	52,416	1,444	53,860						2,514	23,040	21,600	6,706			53,860	
7	4	Deming	44	44	88									88			88	
7	5	Dona Ana	1	0	1									1			1	
7	6	Rincon	162	28	190									190			190	
7	7	Hatch	2,007	190	2,197									2,197			2,197	
7	8	Las Uvas	30	39	69									69			69	
7	9	Uvas Valley	1	0	1									1			1	
7	10	Placitas	1	0	1									1			1	
7	11	Salem	412	22	434									434			434	
7	12	Garfield	243	24	267									267			267	
7	13	Derry	91	41	132									132			132	
7	14	Arrey	576	78	654									654			654	
7	15	Caballo	1	0	1									1			1	
7	16	HOLLOMAN AFB	0	2	2									2			2	
<b>Quarterly Deployment Totals</b>			<b>507,925</b>	<b>20,861</b>	<b>528,786</b>	<b>19,950</b>	<b>51,210</b>	<b>54,132</b>	<b>72,720</b>	<b>73,635</b>	<b>71,816</b>	<b>75,600</b>	<b>51,412</b>	<b>45,463</b>	<b>12,848</b>	<b>0</b>	<b>0</b>	<b>528,786</b>
<b>Cumulative Deployment Totals</b>						<b>19,950</b>	<b>71,160</b>	<b>125,292</b>	<b>198,012</b>	<b>271,647</b>	<b>343,463</b>	<b>419,063</b>	<b>470,475</b>	<b>515,938</b>	<b>528,786</b>	<b>528,786</b>	<b>528,786</b>	

Mon - 01/02/2023	New Years Day
Mon - 01/16/2023	Martin Luther King Day
Fri - 04/07/2023	Good Friday
Mon - 05/29/2023	Memorial Day
Tue - 07/04/2023	July 4th
Mon - 09/04/2023	Labor Day
Fri - 11/10/2023	Veterans Day
Thu - 11/23/2023	Thanksgiving Day
Fri - 11/24/2023	Thanksgiving Day After
Mon - 12/25/2023	Christmas Eve
Tue - 12/26/2023	Christmas Day
Mon - 01/01/2024	New Years Day
Mon - 01/15/2024	Martin Luther King Day
Mon - 04/29/2024	Good Friday
Mon - 05/27/2024	Memorial Day
Thu - 07/04/2024	July 4th
Mon - 09/02/2024	Labor Day
Mon - 11/11/2024	Veterans Day
Thu - 11/28/2024	Thanksgiving Day
Fri - 11/29/2024	Thanksgiving Day After
Tue - 12/24/2024	Christmas Eve
Wed - 12/25/2024	Christmas Day
Tue - 12/31/2024	New Years Eve
Wed - 01/01/2025	New Years Day
Mon - 01/20/2025	Martin Luther King Day
Fri - 04/18/2025	Good Friday
Mon - 05/26/2025	Memorial Day
Fri - 07/04/2025	July 4th
Mon - 09/01/2025	Labor Day
Tue - 11/11/2025	Veterans Day
Thu - 11/27/2025	Thanksgiving Day
Fri - 11/28/2025	Thanksgiving Day After
Wed - 12/24/2025	Christmas Eve
Thu - 12/25/2025	Christmas Day
Wed - 12/31/2025	New Years Eve
Thu - 01/01/2026	New Years Day

# Optimization Areas v3.4.6

El Paso Electric (EPE)

*Based on Project Meter Counts*

# OPTIMIZATION AREA SUMMARY

*Optimization Area target is between 50,000 and 100,000 endpoints.*

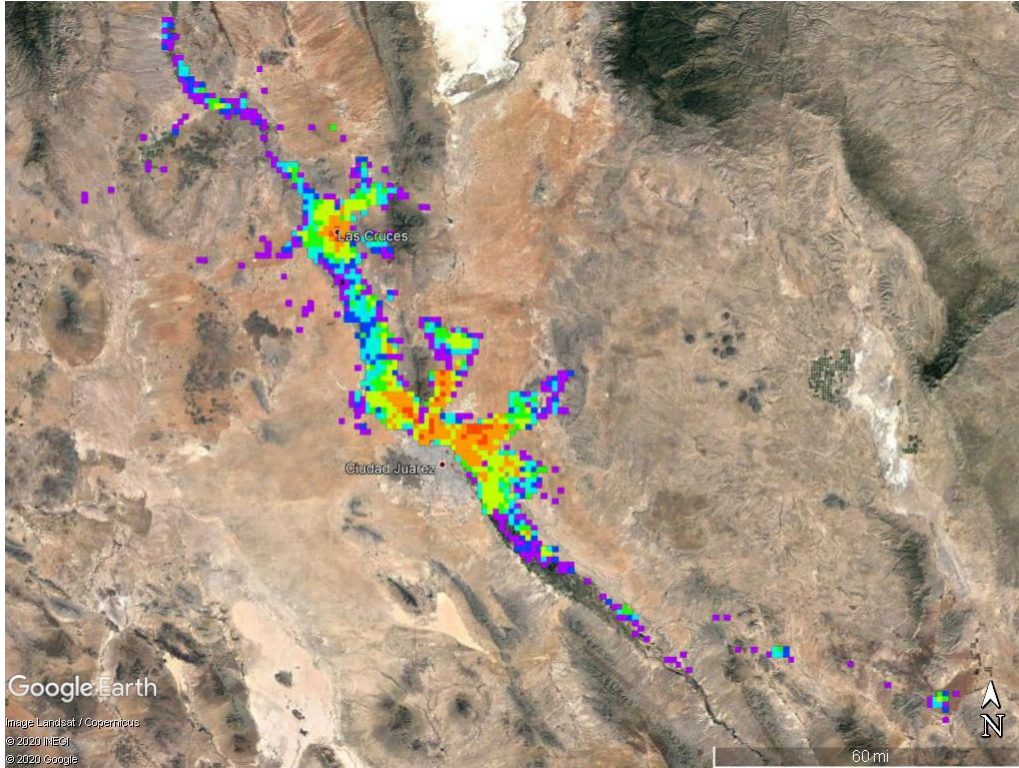
OA1 - TX		OA2 - TX		OA3 - TX		OA4 - TX		OA5 - TX		OA6 - NM		OA7 - NM	
Zip Code	Count	Zip Code	Count	Zip Code	Count	Zip Code	Count	Zip Code	Count	Zip Code	Count	Zip Code	Count
79901	6,480	79821	3,012	79907	23,089	79935	9,017	79836	3,021	88005	19,252	87930	668
79902	11,997	79835	5,217	79910	0	79936	47,341	79838	4,129	88008	3,115	87931	1
79903	8,677	79911	4,257	79915	17,320	79937	3	79839	983	88011	20,855	87933	137
79904	13,913	79912	38,976	79925	21,195	79938	37,991	79849	5,466	88021	7,449	87936	274
79905	11,334	79932	14,057		<b>61,604</b>		<b>94,352</b>	79851	575	88024	899	87937	2,186
79906	295	79934	12,712					79853	1,319	88027	460	87940	199
79908	2		<b>78,231</b>					79855	1,620	88044	1,101	87941	449
79916	0							79927	18,004	88046	1,465	88001	24,099
79920	1							79928	32,931	88047	458	88002	1
79922	4,120								<b>68,048</b>	88048	1,317	88007	13,420
79924	27,569									88058	589	88012	16,351
79930	12,344									88063	6,795	88030	114
	<b>96,732</b>									88072	1,156	88032	1
										88081	7,005	88052	3
										<b>71,916</b>		88330	0
												<b>57,903</b>	

# OPTIMIZATION AREA SUMMARY

## Service Cycles

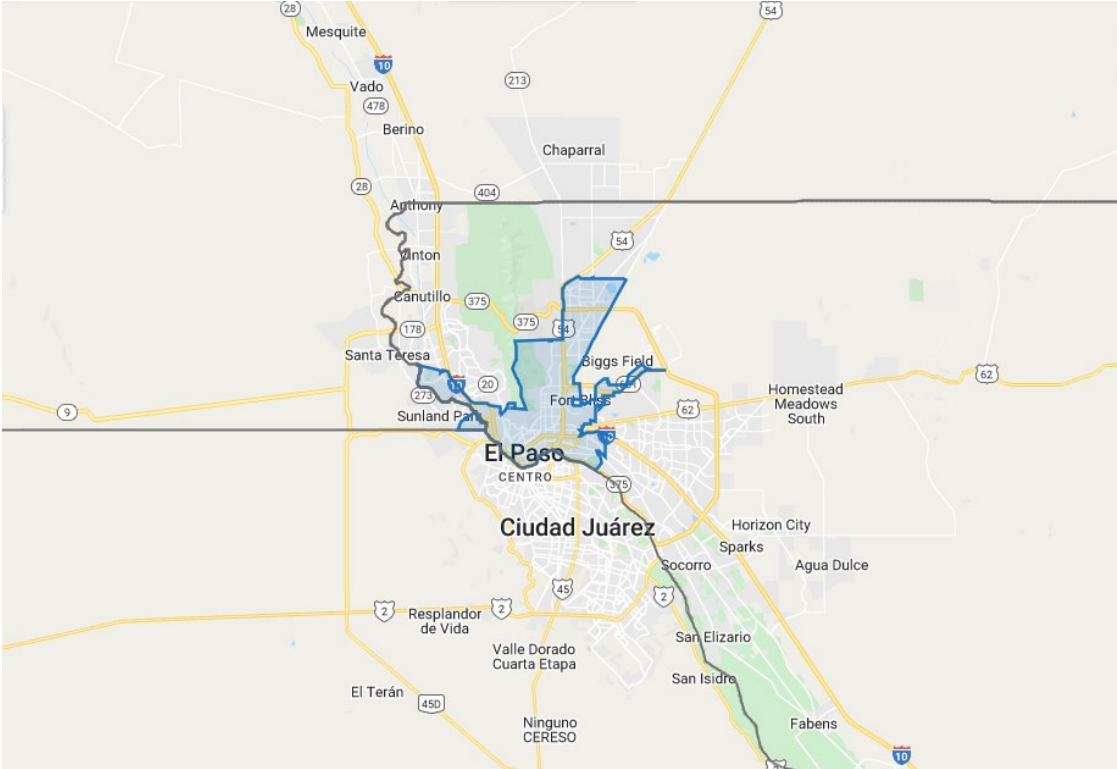
Area	SC01	SC02	SC03	SC04	SC05	SC06	SC07	SC08	SC09	SC10	SC11	SC12	SC13	SC14	SC15	SC16	SC17	Totals
1	247	3,798	436	23,235	5,739	121	0	0	0	1	0	5	36	12,471	22,464	20,262	7,917	<b>96,732</b>
2	23,522	15,912	24,106	13	0	132	2	569	2	253	291	709	0	2	0	50	12,668	<b>78,231</b>
3	0	0	13	5	16,586	22,578	842	378	2	1	1	45	11,509	9,433	189	3	19	<b>61,604</b>
4	2	0	0	0	0	3	8	28	22,579	17,774	21,469	23,004	9,409	69	0	0	7	<b>94,352</b>
5	1	0	0	0	0	3,032	20,841	25,312	1,541	4,595	5,209	3,542	1,775	1,605	0	588	7	<b>68,048</b>
6	2,333	9,869	4,965	2,892	2,885	9,662	1,675	2,073	10,999	1,194	4,122	349	1,406	1,384	7,496	7,559	1,053	<b>71,916</b>
7	0	1,318	1,728	1,332	3,300	241	8,224	4,159	381	7,741	19	3,623	8,276	7,137	2,947	5,095	2,382	<b>57,903</b>
<b>Totals</b>	<b>26,105</b>	<b>30,897</b>	<b>31,248</b>	<b>27,477</b>	<b>28,510</b>	<b>35,769</b>	<b>31,592</b>	<b>32,519</b>	<b>35,504</b>	<b>31,559</b>	<b>31,111</b>	<b>31,277</b>	<b>32,411</b>	<b>32,101</b>	<b>33,096</b>	<b>33,557</b>	<b>24,053</b>	<b>528,786</b>

# DENSITY MAP



EPE Meter Density Range		
	1	10
	10	25
	25	50
	50	100
	100	250
	250	1000
	1000	2500
	2500	5000

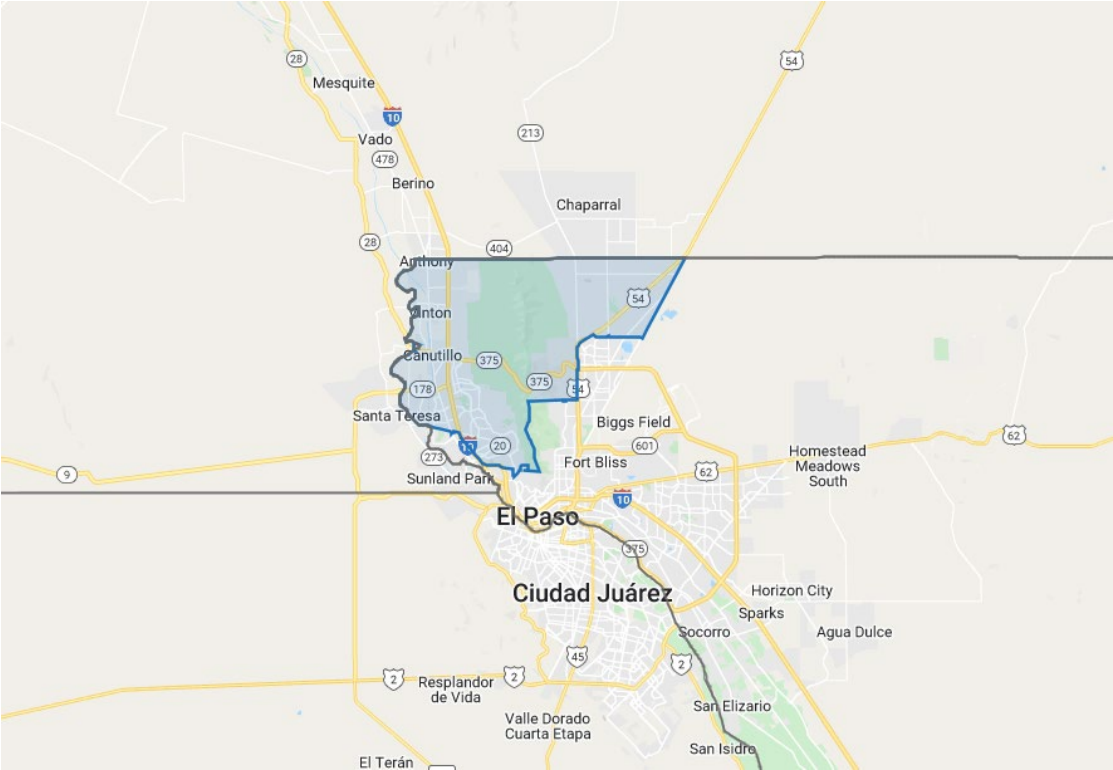
# OPTIMIZATION AREA 1 – TX



OA1 - TX			
Zip Code	Count	Cycle	Count
79901	6,480	SC01	247
79902	11,997	SC02	3,798
79903	8,677	SC03	436
79904	13,913	SC04	23,235
79905	11,334	SC05	5,739
79906	295	SC06	121
79908	2	SC07	0
79916	0	SC08	0
79920	1	SC09	0
79922	4,120	SC10	1
79924	27,569	SC11	0
79930	12,344	SC12	5
<b>96,732</b>		SC13	36
		SC14	12,471
		SC15	22,464
		SC16	20,262
		SC17	7,917
		<b>96,732</b>	



# OPTIMIZATION AREA 2 – TX



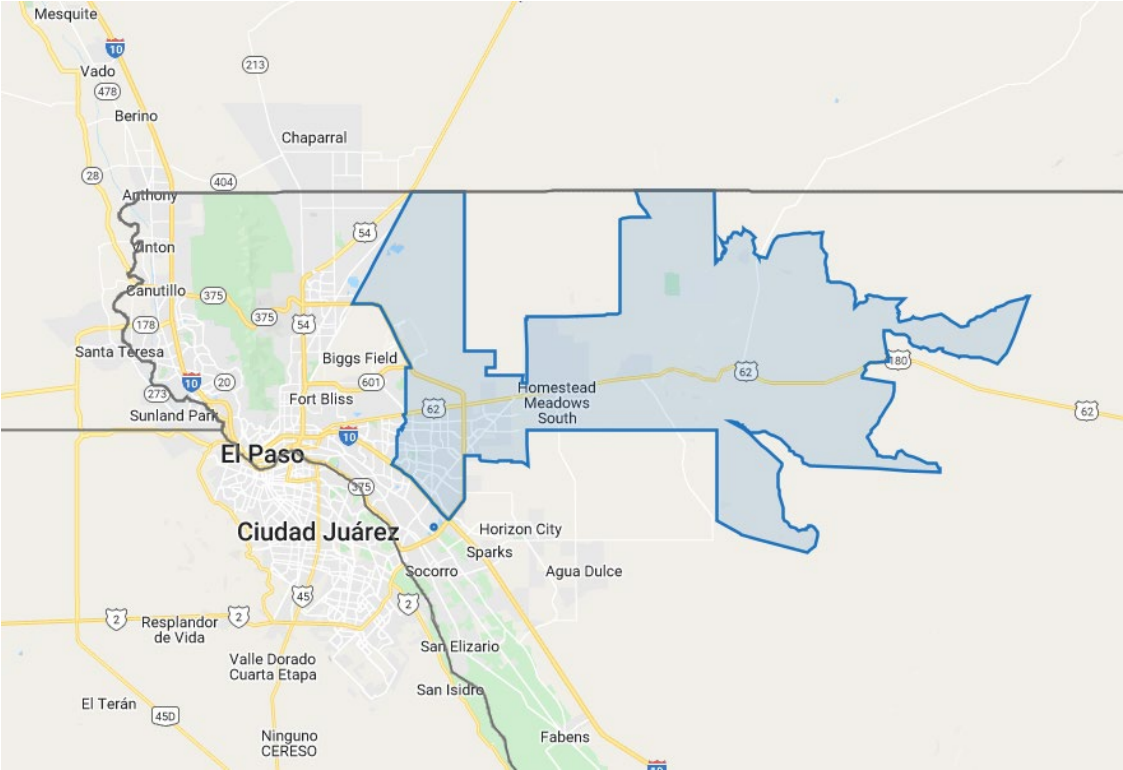
OA2 - TX			
Zip Code	Count	Cycle	Count
79821	3,012	SC01	23,522
79835	5,217	SC02	15,912
79911	4,257	SC03	24,106
79912	38,976	SC04	13
79932	14,057	SC05	0
79934	12,712	SC06	132
	<b>78,231</b>	SC07	2
		SC08	569
		SC09	2
		SC10	253
		SC11	291
		SC12	709
		SC13	0
		SC14	2
		SC15	0
		SC16	50
		SC17	12,668
			<b>78,231</b>

# OPTIMIZATION AREA 3 – TX



OA3 - TX			
Zip Code	Count	Cycle	Count
79907	23,089	SC01	0
79915	17,320	SC02	0
79925	21,195	SC03	13
	<b>61,604</b>	SC04	5
		SC05	16,586
		SC06	22,578
		SC07	842
		SC08	378
		SC09	2
		SC10	1
		SC11	1
		SC12	45
		SC13	11,509
		SC14	9,433
		SC15	189
		SC16	3
		SC17	19
			<b>61,604</b>

# OPTIMIZATION AREA 4 – TX



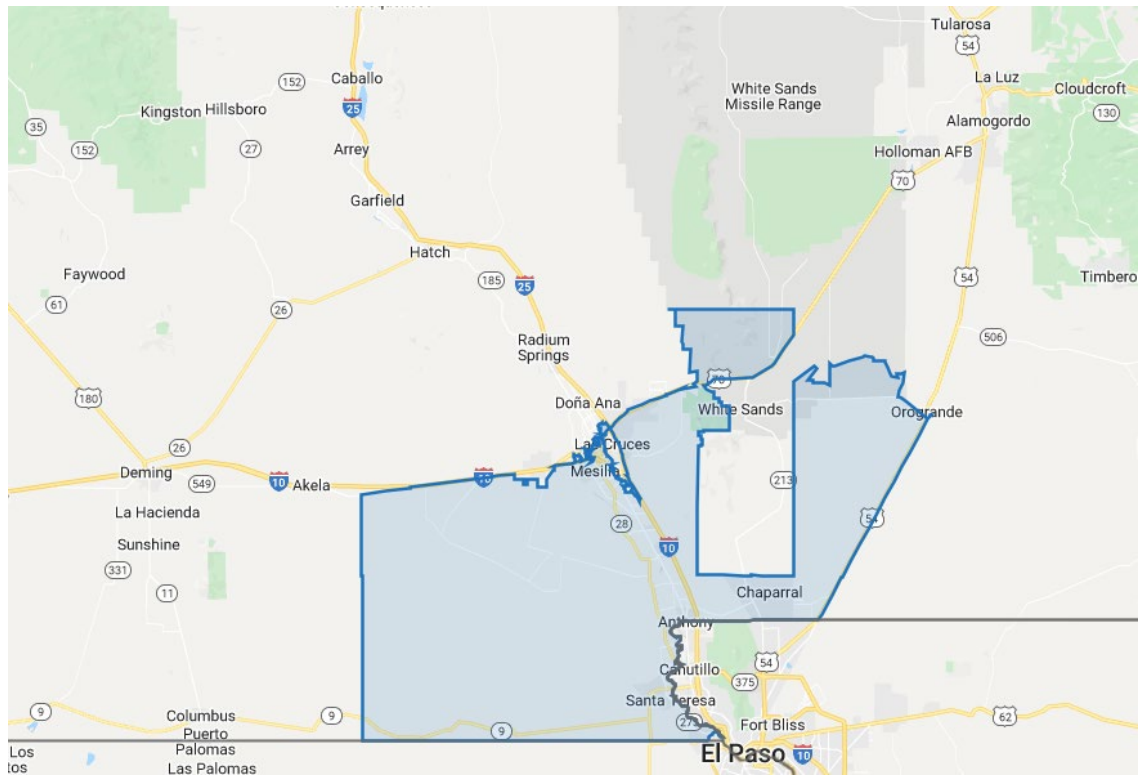
OA4 - TX			
Zip Code	Count	Cycle	Count
79935	9,017	SC01	2
79936	47,341	SC02	0
79937	3	SC03	0
79938	37,991	SC04	0
<b>94,352</b>		SC05	0
		SC06	3
		SC07	8
		SC08	28
		SC09	22,579
		SC10	17,774
		SC11	21,469
		SC12	23,004
		SC13	9,409
		SC14	69
		SC15	0
		SC16	0
		SC17	7
		<b>94,352</b>	

# OPTIMIZATION AREA 5 – TX



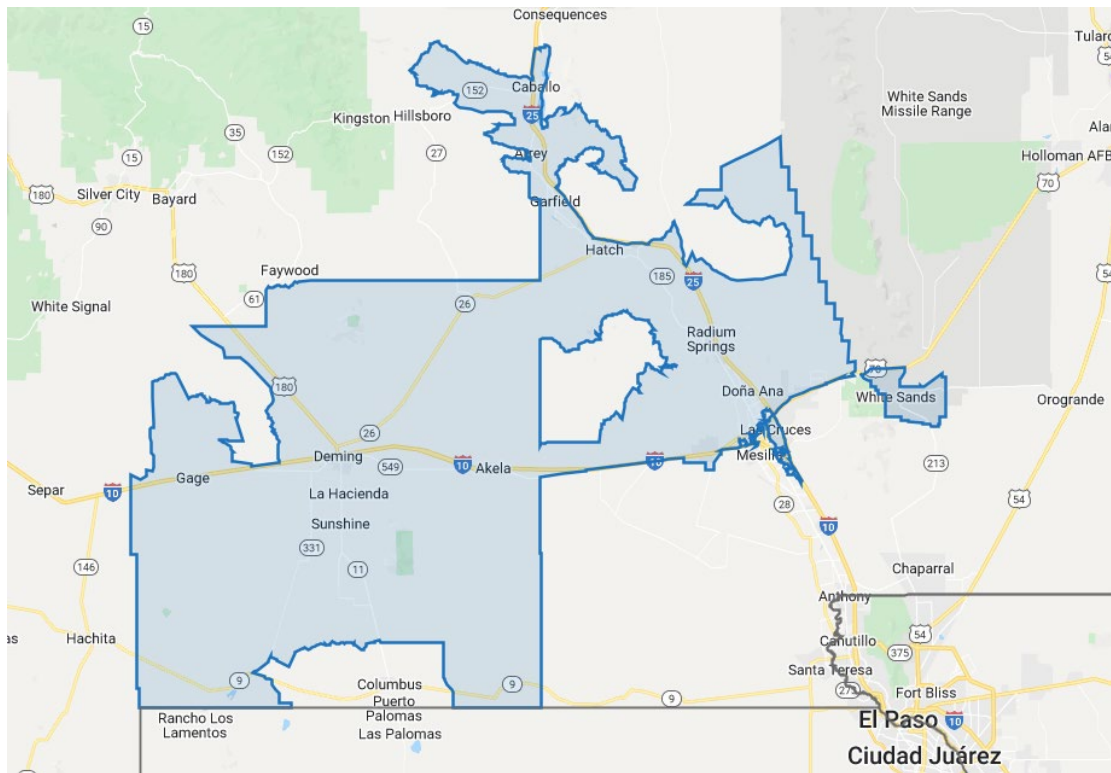
OA5 - TX			
Zip Code	Count	Cycle	Count
79836	3,021	SC01	1
79838	4,129	SC02	0
79839	983	SC03	0
79849	5,466	SC04	0
79851	575	SC05	0
79853	1,319	SC06	3,032
79855	1,620	SC07	20,841
79927	18,004	SC08	25,312
79928	32,931	SC09	1,541
	<b>68,048</b>	SC10	4,595
		SC11	5,209
		SC12	3,542
		SC13	1,775
		SC14	1,605
		SC15	0
		SC16	588
		SC17	7
			<b>68,048</b>

# OPTIMIZATION AREA 6 – NM



OA6 - NM			
Zip Code	Count	Cycle	Count
88005	19,252	SC01	2,333
88008	3,115	SC02	9,869
88011	20,855	SC03	4,965
88021	7,449	SC04	2,892
88024	899	SC05	2,885
88027	460	SC06	9,662
88044	1,101	SC07	1,675
88046	1,465	SC08	2,073
88047	458	SC09	10,999
88048	1,317	SC10	1,194
88058	589	SC11	4,122
88063	6,795	SC12	349
88072	1,156	SC13	1,406
88081	7,005	SC14	1,384
	<b>71,916</b>	SC15	7,496
		SC16	7,559
		SC17	1,053
			<b>71,916</b>

# OPTIMIZATION AREA 7 – NM



OA7 - NM			
Zip Code	Count	Cycle	Count
87930	668	SC01	0
87931	1	SC02	1,318
87933	137	SC03	1,728
87936	274	SC04	1,332
87937	2,186	SC05	3,300
87940	199	SC06	241
87941	449	SC07	8,224
88001	24,099	SC08	4,159
88002	1	SC09	381
88007	13,420	SC10	7,741
88012	16,351	SC11	19
88030	114	SC12	3,623
88032	1	SC13	8,276
88052	3	SC14	7,137
	<b>57,903</b>	SC15	2,947
		SC16	5,095
		SC17	2,382
			<b>57,903</b>